

Admitted ESL Student Checklist

STUDENT VISA:

DEADLINE:

✓	Review your Form I-20 and email ois@govst.edu immediately if there are any errors.	Now
	Pay I-901 SEVIS fee (required for visa appointment): Pay online at http://www.FMJfee.com .	This week
	Print out copy of receipt verifying SEVIS fee has been paid.	This week
	Visit the EducationUSA office closest to you for insight on the VISA application and interview process: https://educationusa.state.gov/	Prior to your scheduled VISA appointment
	Prepare for VISA interview: Schedule an optional mock visa interview with OIS. Email ois@govst.edu to schedule the best date and time to Skype with an OIS Representative. Applicants in India may contact one of our Country Managers to schedule a mock visa interview: https://www.govst.edu/India-Manager	Prior to your scheduled VISA appointment
	Schedule visa appointment with the American Embassy or Consulate in your home country of residence. http://www.usembassy.gov	This week
	Gather documents and prepare for your visa interview. <i>Passport, admission letter, I-20, bank documents, proof of SEVIS fee payment</i>	Before interview
	Notify OIS when your visa is approved by emailing ois@govst.edu .	After interview

PREPARATIONS TO COME TO GOVERNORS STATE UNIVERSITY:

DEADLINE:

	Getting to the United States: Please review this website. https://studyinthestates.dhs.gov/getting-to-the-united-states	As soon as possible
	**Important: Do not travel to the US more than <u>30 days</u> before the GSU Program Start Date listed on your I-20. <ul style="list-style-type: none"> This means you can enter the United States on or after April 17, 2021. <i>We strongly suggest you plan to arrive <u>no later than May 10, 2021</u> since orientations will likely take place that week.</i> 	No earlier than 4/17/2021
	Purchasing Airline Tickets: The closest airports to Governors State University are Chicago O'Hare International Airport (code: ORD) Chicago Midway Airport (code: MDW)	As soon as possible
	Housing: Students are responsible for making their own housing arrangements. The Office of International Services is unable to make on- or off-campus housing reservations for you.	As soon as possible
	On-campus Housing: Please visit our University Housing website for information and applications for on-campus housing. http://www.govst.edu/Campus_Life/University_Housing/	Applications open in early March


 See Page 2

ORIENTATIONS AND CHECK-IN**DEADLINE:**

	You are required to attend ESL Placement Testing Date: Friday, May 14, 2021 Time: 9:30am Location: Goodman Malamuth Technology (GMT) Bldg, Room 180	5/14/2021
	International Student Check-In: All international students are required to check in with OIS in person upon arrival and no later than orientation. Check-in instructions will be sent to you by email.	By 5/14/2021
	Mandatory ESL Student Orientation Date: Monday, May 17, 2021 Time: 9:30am Location: Goodman Malamuth Technology (GMT) Bldg, Room 180	5/17/2021
	The first day of classes for Summer 2021 is Monday, May 17, 2021	

ACADEMIC AND STUDENT LIFE**DEADLINE:**

	Check out your GSU email account and the GSU Student Portal. Access information is found on your letter of admission to GSU.	Now
	Gather immunization records. Students must submit immunization records. For more information and to get started, please go to the GSU Immunization website at http://www.govst.edu/immunization/ . Please provide completed records by the deadline.	By 5/17/2021
	Student Insurance. All GSU students are required to carry health insurance from a US-based provider. GSU will automatically enroll you in our health insurance plan once you start the ESL program; <u>do not purchase it</u> before you arrive. However, you are strongly advised to carry travel health insurance coverage until 5/15/2021.	

OTHER INFORMATION**DEADLINE:**

	If you are conditionally admitted into a credit-bearing program and you want your condition removed, you must present to the Office of International Service (OIS) a new IELTS or TOEFL score by April 1, 2021. For graduate students, the minimum scores are TOEFL-80 (with 20+ on each individual test subsection) and IELTS-6.0. The condition will not be removed unless you have turned this in before April 1, 2021.	By 4/1/2021
--	--	-------------

CONTACT INFORMATION FOR ESL PROGRAM

English Language Learning Center
Governors State University
GMT 146
1 University Parkway
University Park, IL 60484
Phone: +1 (708) 235-6922
Email: esl@govst.edu
Website: <https://www.govst.edu/esl/>



All incoming students are required to use Med+Proctor to submit medical/immunization records.

Submitting this information is easy!



Step 1: Register



Visit medproctor.com and click "register" to start a new account. Type in your school email address to get started and follow the directions to register a new account.

Step 2: Download

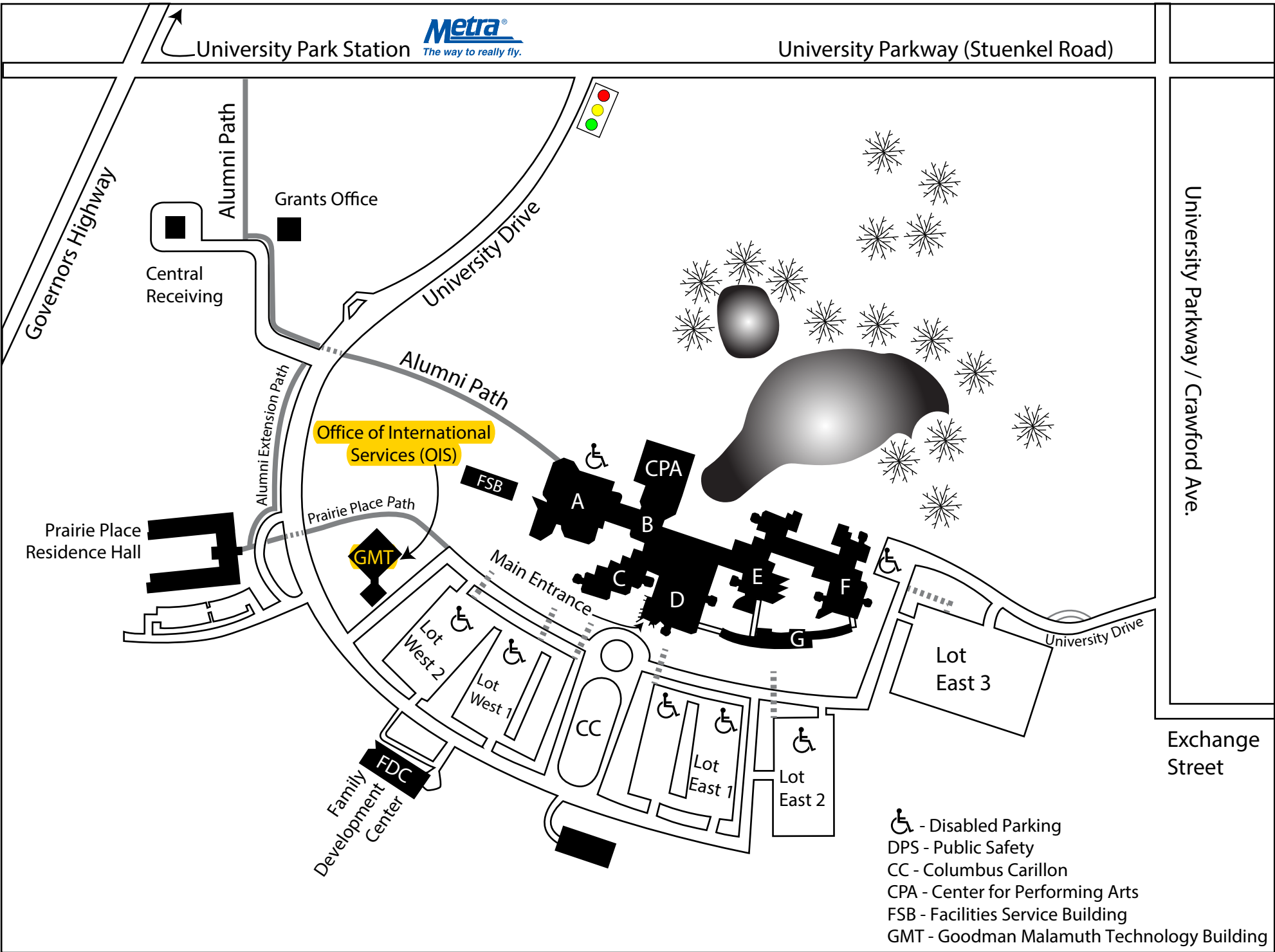


Fill out any required personal, medical or insurance information. Download the required forms and follow the directions provided.

Step 3: Upload



Log back in to your Med+Proctor account and upload a copy of your forms. Make sure your forms are complete and legible. You will receive an email confirmation once the forms have been reviewed.





*Financial Services and
Comptroller*
University Park, IL 60484
708.235.3990
Fax: 708.534.8450
www.govst.edu

First Midwest Bank - SWIFT Instructions for Incoming Wire Transfers

Originating Bank – using First Midwest Bank’s Correspondent

Intermediary Bank: Bank of New York Mellon

Intermediary Bank Address: One Wall Street, New York, New York 10286

Intermediary Bank SWIFT: IRVTUS3N

Intermediary Bank Account: 8901039004 First Midwest Bank

Please contact the Wire Transfer Department with any questions or concerns.

First Midwest Bank
Wire Transfer Department
One Pierce Place Ste. 1500
Itasca, IL 60143 USA
wiresenotify@firstmidwest.com
630-875-7378



Preparing for your visa interview

General Tips

- Arrive to the consular office early.
- Be sure to carry your passport, I-20, receipt for I-901 SEVIS fee payment, and other supporting documentation for your visa application.
- Prepare to go through a security checkpoint and be fingerprinted.
- Leave any electronics, including mobile phones, at home.
- Your interview will likely take only a few minutes.
- Be relaxed, honest, and candid.
- Answer only the questions that are asked, in a direct and concise manner. Be specific.
- If you don't understand a question or didn't hear it well, ask the officer to repeat or rephrase it.

Questions to consider as you prepare for your interview

(Note: these questions are meant only for preparation, there is no guarantee that you will be asked any of these questions in your actual interview).

- Why do you want to travel to the United States?
- Who is sponsoring you/funding your education?
- Did you take the SAT/GMAT/GRE? If not, why?
- What is your annual income?
- Do you have a credit card?
- How many children do you have? Where are they?
- Do you know anyone in the United States?
- How long will you be staying in the United States?
- Do you plan to work during your time in the United States?
- How can you assure that you will return to your home country?
- Tell me about your university. Mention some professors' names.
- Why did you choose the specified university?
- How many universities have you applied to? (both admits and rejections)
- Which university accepted you?
- Where did you do your secondary/undergraduate studies?
- What do your parents do for a living?
- What is your parents' income?
- Do you have any siblings?
- Do you have any relatives in the United States?
- What will you do after completing your degree? (plans after graduation)
- Did you get any scholarships?
- Why do you think the university is giving you a scholarship?
- Why didn't you get a scholarship?
- Do you have any educational loans?

Continued on Page 2

- Show your passbook/bank statement
- What is your undergraduate GPA/percentage?
- If your parents are retired, how will they pay for your education?
- Tell me how you can prove that you are going to come back to your home country.
- Where did your parents/siblings complete their studies?
- Why are you leaving your current job? (If you are working).
- Have you ever been to the United States?
- What will you do after coming back to your home country?
- Where do your parents live?
- Do you have a sibling/relative already at this university?
- Do you know anyone in the US in your university?
- What will you do if your visa is rejected?
- Will you come home during summer vacations?
- Why do you wish to study in the United States and not in your home country?
- What do you plan to study in the university?
- If you have changed your field of specialization (for example, an undergraduate degree in pharmacy and opting for a master's degree in computer science), what brought about the change?
- What steps have you taken to ensure that you will be able to perform well in the new field of study?
- How will you finance your education for 2 or 3 years? (Generally you have to prove that you have sufficient funds for the first year of education, but it is suggested to be prepared with the answer).

LIVE ON CAMPUS



Walk to Your Classes
Walk to the Library
Walk to the Fitness Center
Meet Other GSU Students
Make New Friends

Price Includes:

- Wireless internet
- All utility costs (electric, gas, water, laundry)
- Free Cable Service (80+ Channels)
- Furnished room/apartment
- Shuttle Service to Academic Buildings and Metra Station

Great Benefits:

- Access to faculty in building
- Study & lounge areas in the building
- Kitchens in apartments and lounges
- On-site staff to provide support
- Convenience Store and vending machines

ACT FAST - RESERVE YOUR GSU HOME

1. Go to: <http://www.govst.edu/housing/>

2. Click on the button:



3. Go to the bottom of the page and click on:
[Apply to University Housing](#)

4. Enter the System login (*username*) and Password listed on your acceptance letter.

5. Fill out your application. Read the agreement and agree to the terms.

6. Pay your one-time \$25 Application Fee & \$100 prepayment for housing.

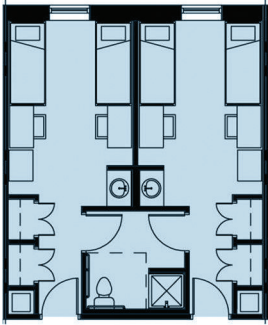
Questions — Contact us at: housing@govst.edu

Visit our website to view your options: www.govst.edu/housing/

On Campus Living AND Learning



Prairie Place Unit Types



Suite

(room with roommate and shared bath with suite next door)

\$3173/Fall semester*

\$3173/Spring semester*

\$2470/Summer*
(if attending summer school)



Two Bedroom Apartment

(double occupancy bedroom–roommate)

\$3734/Fall semester*

\$3734/Spring semester*

\$2882/Summer*
(if attending summer school)



Four Bedroom Apartment

(single occupancy bedroom)

\$4492/Fall semester*

\$4492/Spring semester*

\$3477/Summer* (if attending summer school)

* Resident students will be assigned a meal plan according to their housing unit type for the Fall and Spring semesters.

* Rates listed apply to 20-21.
Rates are likely to increase 3.5 percent for 2021-22.



Two Bedroom Apartment

(single occupancy bedroom–limited number available)

\$5337/Fall semester*

\$5337/Spring semester*

\$4117/Summer*
(if attending summer school)

University Housing

housing@govst.edu • 708.235.7110 • www.govst.edu/housing

Financial aid may apply to housing and meal plan costs. For more information, go to www.govst.edu/financialaid or call 708.534.4480

